



# CHERRY HILL FIRE DEPARTMENT

CAMDEN COUNTY, NEW JERSEY

Valid  
1/1/2010-  
12/31/2010

## SMOKE DETECTOR & CARBON MONOXIDE DETECTOR INSPECTION INFORMATION

Please submit your request for an inspection at least two (2) to three (3) weeks prior to the settlement date using the online form located at [www.cherryhillfire.org/sdinspections.asp](http://www.cherryhillfire.org/sdinspections.asp). When submitting the request, you will be prompted to select the date of the inspection. You will be notified of the appointment time prior to the scheduled inspection date. If you do not have internet access, please call **856-429-7441**.

Fees: Check or money order money order payable to the "Cherry Hill Fire Department" is due at the time of inspection. Cash payment **will not** be accepted. Credit card payments are accepted through the website.

Requests received eight (8) calendar days or more prior to the settlement date:	\$100.00
Requests received seven (7) calendar days prior to the settlement date:	\$115.00
Requests received three (3) calendar days or less to the settlement date:	\$162.00

**Sellers age 62 and older may deduct \$30.00 from the above fees. PROOF OF AGE REQUIRED.**  
**If more than two (2) inspections are necessary, an additional fee will be charged.**  
**Certificates are valid for ninety (90) days from the date of the last inspection.**

### RESIDENTIAL RESALE INSPECTION REQUIREMENTS FOR ONE AND TWO FAMILY DWELLINGS

All properties must be ready for inspection on the appointment date. If the property has a monitored alarm system, the alarm company must be notified that a smoke detector test will be performed. Codes to activate/deactivate the alarm system must be known by the person attending the inspection.

#### **Smoke and Carbon Monoxide Detector Requirements:**

Smoke Detectors and Carbon Monoxide Detectors must be less than 10 years old.

**SMOKE DETECTOR PLACEMENT:** Every level of a residence and inside every sleeping area. Basement level detectors should be located at the bottom of basement stairwells, at ceiling level (not between joists). Bedroom hallway area smoke detectors **MUST** be within ten (10) feet of **ALL** bedroom doors. Bedroom smoke detectors should be within four (4) feet of the door, on the ceiling.

**WHERE NOT TO LOCATE SMOKE DETECTORS:** To avoid false alarms and/or improper operations, avoid installation of smoke detectors in the following areas:

- KITCHENS – smoke from cooking may cause a nuisance alarm.
- BATHROOMS – excessive steam from a shower may cause a nuisance alarm.
- FORCED AIR DUCTS FOR HEATING OR AIR CONDITIONING – air movement may prevent smoke from reaching detectors.
- NEAR ANY TYPE OF FURNACE – air/dust movement and normal combustion products may cause a nuisance alarm.
- The "dead air" space where the ceiling meets the wall.
- The peak of an "A" frame type ceiling - "dead air" at the top may prevent smoke from reaching the detector.
- Crawl spaces and unfinished attics.

**CARBON MONOXIDE DETECTOR PLACEMENT:** New Jersey law specifies that Carbon Monoxide Detectors are to be installed in the immediate vicinity of **ALL** sleeping areas. Plug-in, battery powered, or hard-wired types are acceptable. Detectors should be installed as per the manufacturer's guidelines and be capable of alerting **ALL** sleeping occupants.

**WHERE NOT TO LOCATE CARBON MONOXIDE DETECTORS:** In electrical outlets which can be turned off by a switch unless the detector has a battery back-up and should **not** be plugged into outlets which are located against the floor molding.

#### **Fire Extinguisher Requirements:**

1. The extinguisher must be an ABC type, rated for residential use.
2. Size of extinguisher shall be no less than 2-½ pounds and no more than 10 pounds.
3. Extinguisher to be mounted in kitchen or within 10 feet of kitchen.

#### **House Number Requirements:**

House numbers must be numerical characters, at least 4" high, permanently affixed to the house and visible from the street.

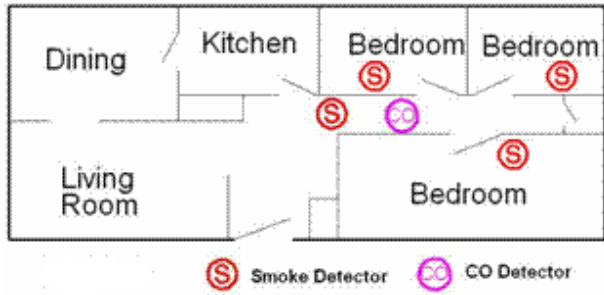


Figure 1

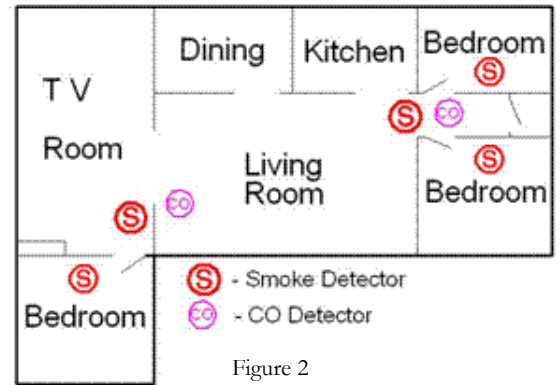


Figure 2

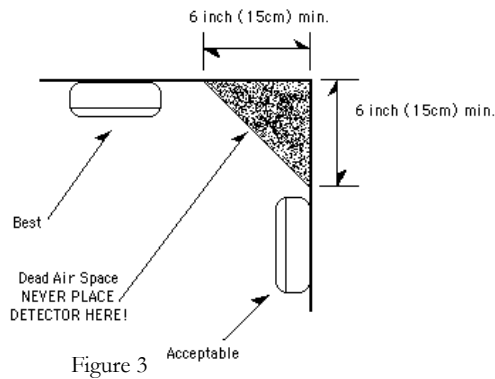


Figure 3

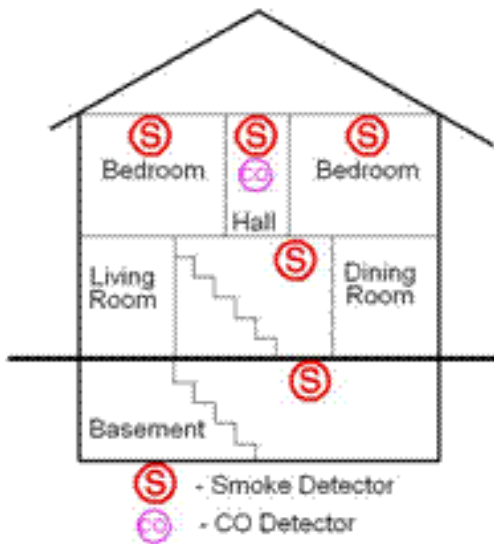


Figure 4

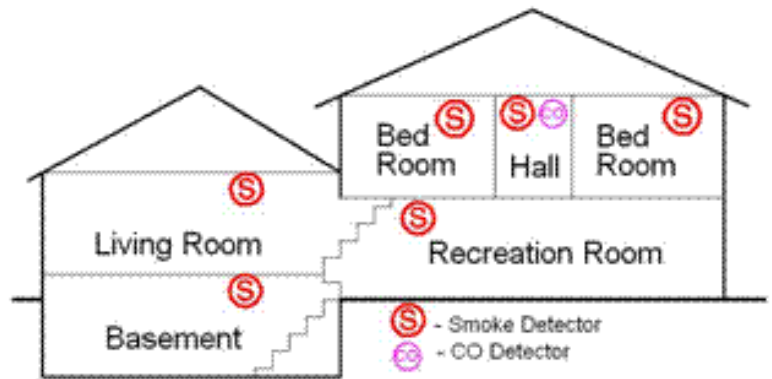


Figure 5